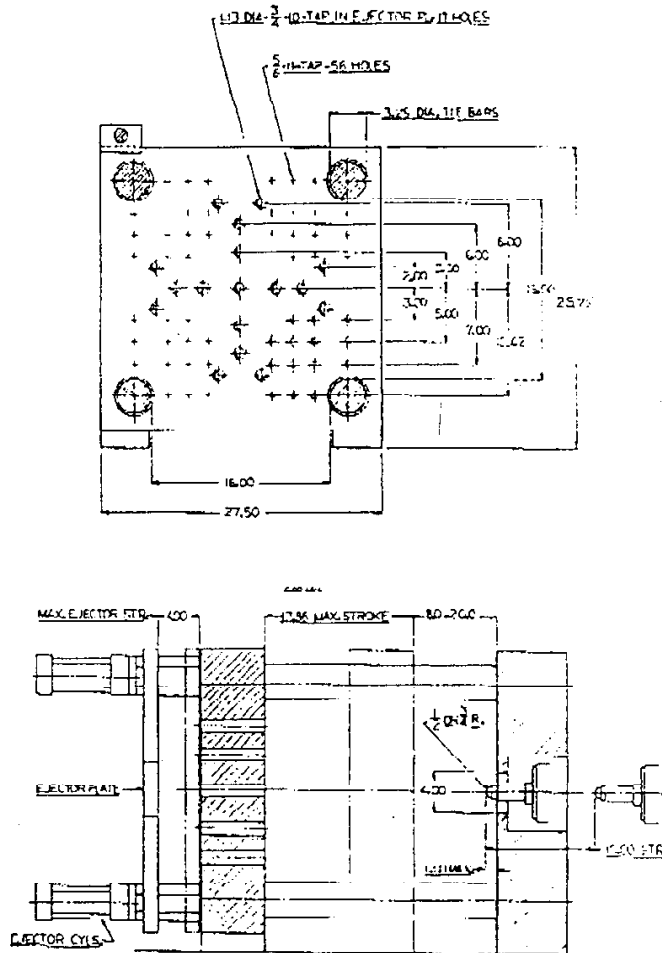


NEWBURY IMPERIAL 200 TON SERIES

STANDARD SPECIFICATIONS

	11 Ounce	14 Ounce
Ounces Molded per Shot/Styrene-----	11.6	14.9
Screw Diameter/In.-----	2.00	2.25
Screw Stroke/In.-----	7.00	
Screw Displacement/Cu. In.-----	22.00	27.82
Screw L/D Ratio-----	20:1	18:1
Injection Pressure/Max. P.S.I.-----	25,000	19,750
Screw RPM Range-----	10-280	
Screw Recovery Rate/Oz. per Sec.---	1.14	1.31
Plasticizing Capacity/Lbs. per Hr.--	256	295
Injection Rate/Cu. In. per Sec.---	11.15	14.12
Injection Rate/Cu. In. per Min.---	669	847
Total Heater Capacity/Watts-----	11,650	
Max. Screw Torque/Lbs.-----	9200	
Max. Clamping Force/Tons-----	200	
Max. Die Stroke/In.-----	13.75	
Space Between Tie Bars(HxV)In.---	18 x 18	
Platen Size(HxV)In.-----	27.5 x 28.0	
Tie Bar Diameter/In.-----	3.25	
Max.-Min. Die Height/In.-----	8.0 - 20.0	
Hydraulic Ejector Stroke/In.-----	4.0	
Max. Hydraulic Ejector Force/Lbs.--	9816	
Die Opening Speed/In. per Min.---	1000	
Die Closing Speed/In. per Min.---	750	
Motor H.P. @ 1200 RPM-----	30	
Combined Pump Volume/GPM-----	36	
Hydraulic Reservoir Capacity/Gal.--	80	
Dimensions(LxWxH)Est./Ft.-----	19 x 5 x 7	
Weight, Domestic/(Lbs.)Est.-----	13,900	

PLATEN DATA



NEWBURY INDUSTRIES, INC. Newbury, Ohio 44065 JO 4-2255
 Price, Design, Material and/or Specifications subject to change without notice and without liability therefore
 ** TOTAL PAGE 03 **